



## **LONGSTROKE VALVES**

# LONGSTROKE VALVES *LSVP 2003*

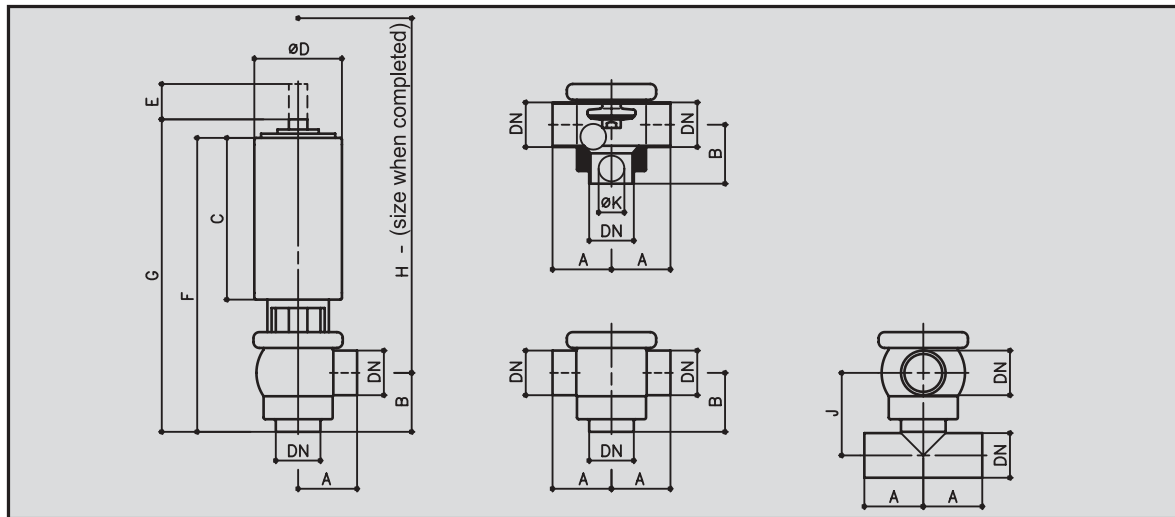


SÜDMO is making the ideal addition to its standard range of products with its longstroke valve series. Developed especially for highly viscous difficult-to-transport media containing solid matter, this longstroke valve also meets all of the hygienic requirements of SÜDMO's other valve series.

SÜDMO only offers the longstroke valve series with the O-ring sealing type on the valve disc. A specially designed reversible actuator together with the right inlay enables an especially long stroke without having to change the housing. This means you can retrofit a longstroke valve with an already installed standard housing.

This is the basis of the SVP model 2003 programme. A standard housing with an altered inlay and modified actuator enable you to meet custom needs and special requirements.

RIGHT ANGLE, DOUBLE RIGHT ANGLE AND CROSS VALVES **LSVP 2003**



right angle

double right angle

cross

S370E LS

S371E LS

S372E LS

Metric

DN	tube
25	ø 29x1.5
40	ø 41x1.5
50	ø 53x1.5
65	ø 70x2.0
80	ø 85x2.0
100	ø104x2.0

A	B	C	ØD	E	F	G	H	J	ØK
60	60	192	104	22	329	376	380	75	16
60	60	192	104	28	333	374	390	82	20
70	70	192	104	42	349	376	400	98	31
80	80	304	154	54	479	540	565	117	46
90	90	304	154	65	496	547	575	135	59
125	100	339	204	80	551	610	660	158	75

OD-tube

DN	tube
1"	ø 25.4x1.65
1 1/2"	ø 38.1x1.65
2"	ø 50.8x1.65
2 1/2"	ø 63.5x1.65
3"	ø 76.1x1.65
4"	ø101.6x2.11

A	B	C	ØD	E	F	G	H	J	ØK
60	60	192	104	22	329	376	380	75	16
60	60	192	104	28	333	374	390	82	20
70	70	192	104	42	349	376	400	98	31
80	80	304	154	54	479	540	565	117	46
90	90	304	154	65	496	547	575	135	59
125	100	339	204	80	551	610	660	158	75

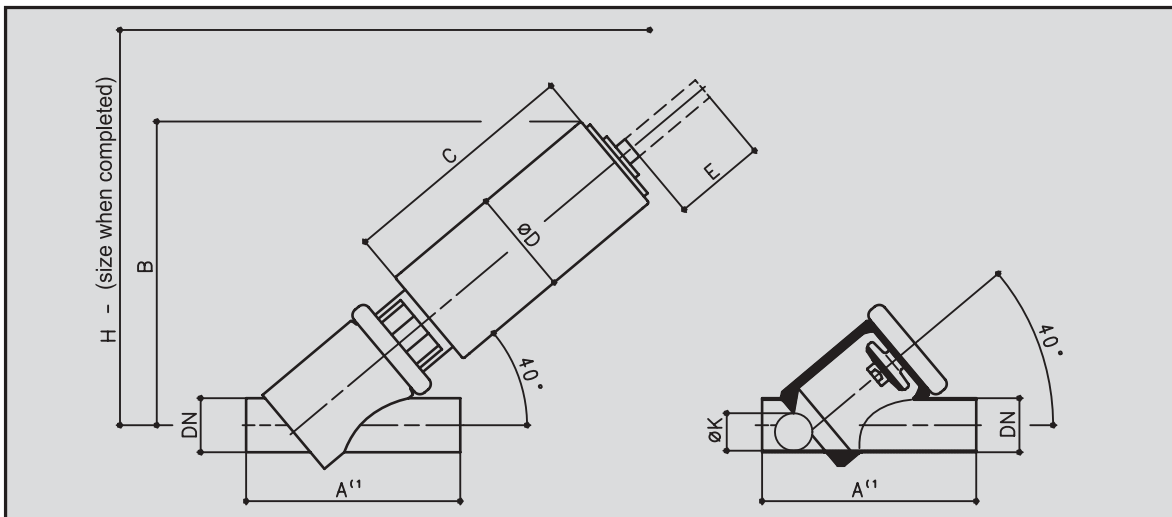
ISO

DN	tube
25	ø 33.7x2.0
40	ø 48.3x2.0
50	ø 60.3x2.0
65	ø 76.1x2.0
80	ø 88.9x2.3

A	B	C	ØD	E	F	G	H	J	ØK
60	60	192	104	22	329	376	380	75	16
70	70	192	104	42	349	376	400	96	31
80	80	304	154	54	479	540	565	112	46
90	90	304	154	65	496	547	575	130	59
125	100	339	204	80	551	610	660	148	75

We reserve ourselves the right to make technical changes

# ANGULAR VALVES *LSVP 2003*



angular valve

S380E LS

## Metric

DN	tube	A	B	C	ØD	E	H	ØK
25	Ø 29x1.5	210 <sup>11</sup>	268	212	104	64	320	22
40	Ø 41x1.5	185	293	238	104	80	360	28
50	Ø 53x1.5	210	298	238	104	90	370	37
65	Ø 70x2.0	250	412	364	154	115	500	49
80	Ø 85x2.0	300	431	364	154	140	520	61
100	Ø104x2.0	330	494	400	204	175	600	75

## OD-tube

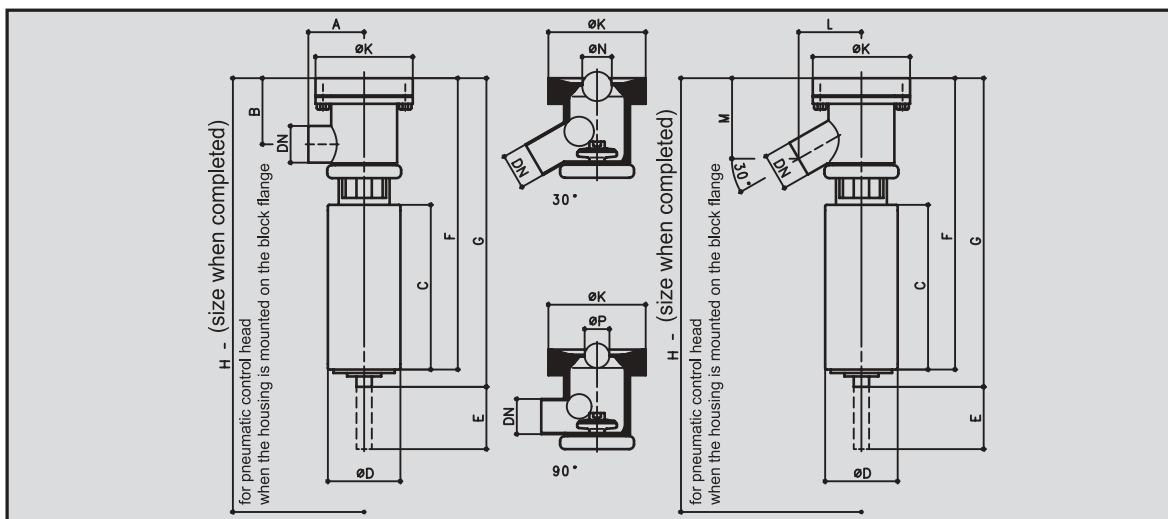
DN	tube	A	B	C	ØD	E	H	ØK
1"	Ø 25.4x1.65	160	270	212	104	64	320	15
1 1/2"	Ø 38.1x1.65	185	295	238	104	80	360	26
2"	Ø 50.8x1.65	210	300	238	104	90	370	35
2 1/2"	Ø 63.5x1.65	250	415	364	154	115	500	44
3"	Ø 76.1x1.65	300	435	364	154	140	520	54
4"	Ø101.6x2.11	330	495	400	204	175	600	71

## ISO

DN	tube	A	B	C	ØD	E	H	ØK
25	Ø 33.7x2.0	160	266	212	104	64	320	22
40	Ø 48.3x2.0	260 <sup>11</sup>	301	238	104	90	375	37
50	Ø 60.3x2.0	310 <sup>11</sup>	417	364	154	115	505	49
65	Ø 76.1x2.0	360 <sup>11</sup>	435	364	154	140	525	61
80	Ø 88.9x2.3	410 <sup>11</sup>	502	400	204	175	610	75

1) valve housing of the series:  
metric DN 25 and ISO 40-80 eccentrically reduced.

# BOTTOM SEAT VALVES LSVP 2003



**bottom seat 90°**

**bottom seat 30°**

S385E LS

S386E LS

### Metric

DN	tube
25	∅ 29x1.5
40	∅ 41x1.5
50	∅ 53x1.5
65	∅ 70x2.0
80	∅ 85x2.0
100	∅104x2.0

A	B	C	∅D	E	F	G	H	∅K	L	M	∅N	∅P
70	79	212	104	64	366	391	500	129.5	70	94	23	16
70	90	238	104	80	409	444	575	129.5	80	110.5	32	25
80	95.5	238	104	90	421	446	600	139.5	90	116	44	33
90	112.5	364	154	115	572	622	800	169.5	100	132	61	48
100	133	364	154	140	600	625	825	179.5	110	153	75	61
120	161	400	204	175	673	698	930	209.5	140	188	98	80

### OD-tube

DN	tube
1"	∅ 25.4x1.65
1 1/2"	∅ 38.1x1.65
2"	∅ 50.8x1.65
2 1/2"	∅ 63.5x1.65
3"	∅ 76.1x1.65
4"	∅101.6x2.11

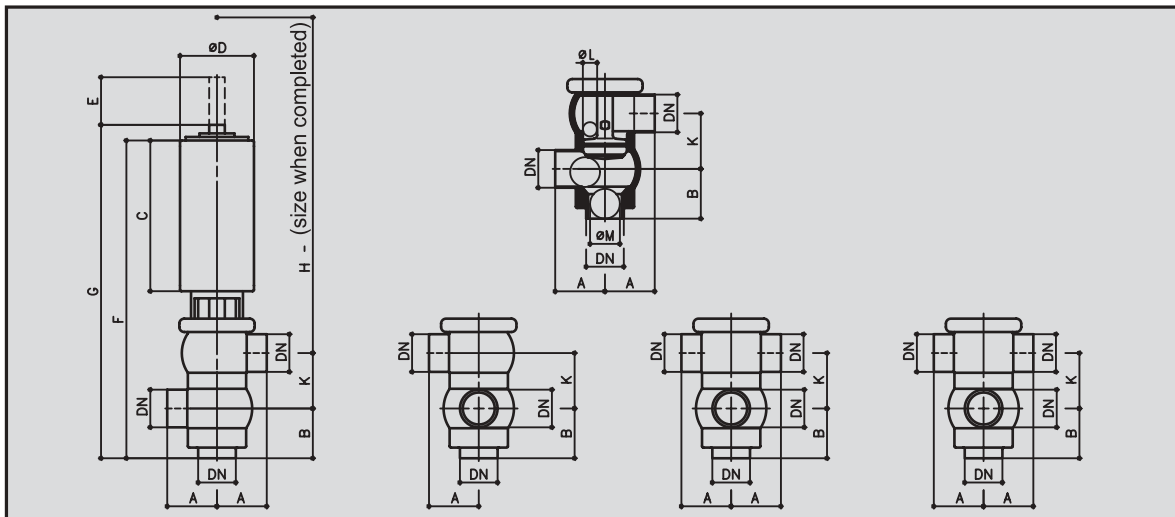
A	B	C	∅D	E	F	G	H	∅K	L	M	∅N	∅P
70	81	212	104	64	366	391	500	129.5	70	97	20	14
70	92	238	104	80	409	444	575	129.5	80	112.5	29	22
80	97	238	104	90	421	446	600	139.5	90	118	41	31
90	115.5	364	154	115	572	622	800	169.5	100	135.5	54	43
100	137	364	154	140	600	625	825	179.5	110	157.5	66	53
120	162.5	400	204	175	673	698	930	209.5	140	189.5	95	78

### ISO

DN	tube
25	∅ 33.7x2.0
40	∅ 48.3x2.0
50	∅ 60.3x2.0
65	∅ 76.1x2.0
80	∅ 88.9x2.3

A	B	C	∅D	E	F	G	H	∅K	L	M	∅N	∅P
70	77	212	104	64	366	391	500	129.5	70	92.5	27	18
80	98.5	238	104	90	421	446	600	139.5	90	119.5	38	29
90	117.5	364	154	115	572	622	800	169.5	100	137.5	50	40
100	137.5	364	154	140	600	625	825	179.5	110	158	66	53
120	169	400	204	175	673	698	930	209.5	140	197	81	66

# CHANGE OVER VALVES *LSVP 2003*



change over 3 x welding end	change over 4 x welding end	change over 4 x welding end	change over 5 x welding end
S390E LS	S391E LS	S392E LS	S393E LS

### Metric

DN	tube
25	Ø 29 x 1.5
40	Ø 41 x 1.5
50	Ø 53 x 1.5
65	Ø 70 x 2.0
80	Ø 85 x 2.0
100	Ø 104 x 2.0

A	B	C	ØD	E	F	G	H	K	ØL	ØM
60	60	212	104	31	407	465	465	58	13	25
60	60	212	104	43	419	465	475	66	13	35
70	70	212	104	51	447	485	500	78	20	42
80	80	304	154	68	573	620	640	94	27	60
90	90	304	154	77	605	643	670	109	33	71
125	100	339	204	94	679	724	760	128	42	89

### OD-tube

DN	tube
1"	Ø 25.4 x 1.65
1 1/2"	Ø 38.1 x 1.65
2"	Ø 50.8 x 1.65
2 1/2"	Ø 63.5 x 1.65
3"	Ø 76.1 x 1.65
4"	Ø 101.6 x 2.11

A	B	C	ØD	E	F	G	H	K	ØL	ØM
60	60	212	104	31	407	465	465	58	13	25
60	60	212	104	43	419	465	475	66	13	35
70	70	212	104	51	447	485	500	78	20	42
80	80	304	154	68	573	620	640	94	27	60
90	90	304	154	77	605	643	670	109	33	71
125	100	339	204	94	679	724	760	128	42	89

### ISO

DN	tube
25	Ø 33.7 x 2.0
40	Ø 48.3 x 2.0
50	Ø 60.3 x 2.0
65	Ø 76.1 x 2.0
80	Ø 88.9 x 2.3

A	B	C	ØD	E	F	G	H	K	ØL	ØM
60	60	212	104	31	407	465	465	58	13	25
70	70	212	104	51	447	485	500	78	20	42
80	80	304	154	68	573	620	640	94	27	56
90	90	304	154	77	605	643	670	109	33	71
125	100	339	204	94	679	724	760	128	42	84

# TECHNICAL DATA

Materials of stainless steel	components in contact with the product	1.4404 (AISI 316L)
	optional	1.4435 (AISI 316L)
	components not in contact	1.4301 (AISI 304)
Sealing elements	sealing material	EPDM (approved by FDA)
	optional	HNBR (approved by FDA)
		other sealing materials at request
Temperatures	permanent operating temperatures	130 ° C (EPDM) / 265° F *
	sterilisation temperature	150 ° C (EPDM) / 300°F *
Pressure	operating pressure	standard 6 bar
		optional 10 bar
	control pressure	min. 6 bar – max. 8 bar
		sealing test in conformity with DIN 3230/BN
Surfaces	surfaces in contact with the product	Ra ≤ 0,8 µm
	surfaces not in contact	metal polished, Ra ≤ 0,8 µm
	optional	optional electrically polished surfaces in contact with the product, higher-quality surfaces at request
Connections	standard	welded ends for pipes in conformity with DIN 11850 series 2, OD tube or DIN EN ISO 1127
	optional	all common screwed and flangings

\* depending upon operating parameters

# LONGSTROKE VALVES



we reserve ourselves the right to make technical changes, 2003-02, ID-Nr.: 2111503

SÜDMO Components GmbH

Industriestrasse 7  
D-73469 Riesbürg  
Germany

Tel. ++49 (0) 9081 80 3-0  
Fax ++49 (0) 9081 80 3-158

Email: [info@sudmo.de](mailto:info@sudmo.de)  
Internet: [www.sudmo.de](http://www.sudmo.de)



A NORIT COMPANY