



Non-Return Valve

Model 2005

Non-return valves are used in all applications where a liquid needs to be prevented from flowing backwards. Its use has been proved in many different sectors of the industry. They are installed in plants such as the pharmaceutical industry, breweries, dairies, soft drink and food production industries.

The SÜDMO non-return valves are available in sizes DN 25-150, 1"-6" and ISO 25-150. For larger sizes the SÜDMO non-return valve utilises the "between flanges" design concept for reliable installation.

Features:

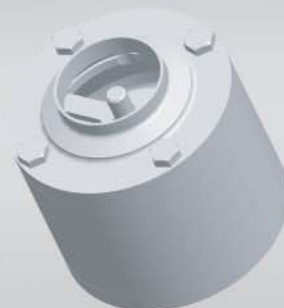
- Easily disassembled - Securing and withdrawal of the inlay via a bayonet catch
- Secured travel range for the valve disk by guide pins placed on the outside diameter of the disc
- Centering of the valve disk without additional guide element
- Maximised flow conditions
- Hygienic construction
- Maximum three sealing elements in the product area
- Standardised seal philosophy by using common o-rings
- One piece valve disk with precise machined o-ring groove
- Use of FDA conform seal material

Customer benefits:

- Fast and simple maintenance
- Quiet running of the valve
- Good cleanability (CIP cleaning)
- Hygienic demand requirements fulfilled
- Installation orientation in both horizontal and vertical planes



Typ 740/741
(Thread - Weld end / Thread - Thread)

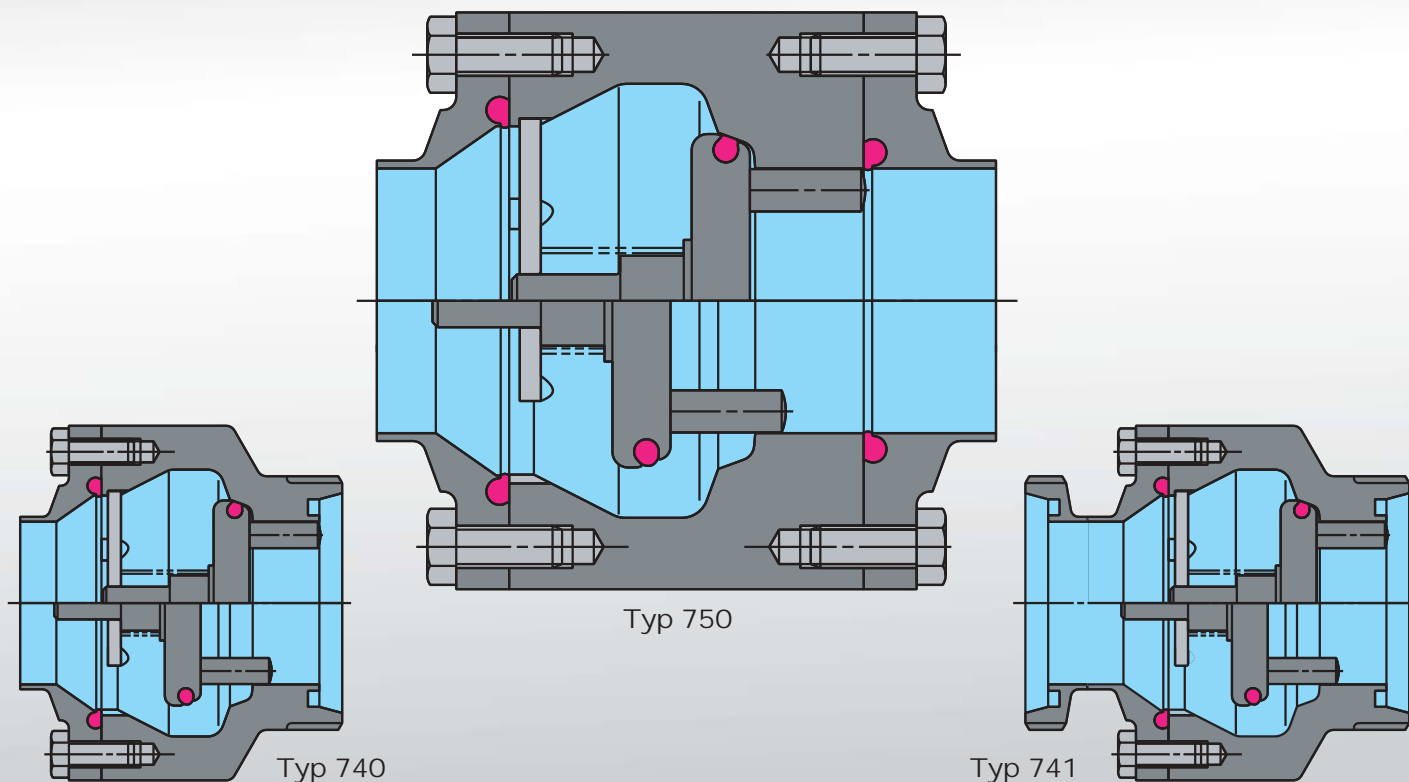


Typ 750
(Between flanges style)

Non-Return Valve

Model 2005

Subject to technical revision '05 ID-No.: 2151109



Technical Data

Material	Standard	1.4404 AISI 316L
	Optional	Other materials on request
Sealing Material	Standard	EPDM
	Optional	HNBR (other sealing materials on request)
Temperatures	Continuous operating temperature	130°C (EPDM) / 265°F *
	Short term (max. 20 min)	150°C (EPDM) / 300°F *
Pressures	Max. operating pressure	Standard 10 bar
	Response pressure	0,04 bar (differential pressure)
	Pressure for fully opening cross section	0,08 bar (differential pressure)
Surfaces	Product wetted surfaces	Ra ≤ 0,8 µm
		Higher quality surfaces on request
Connections	Standard	Between flanges style, thread - weld ends or thread - thread (weld ends for pipes acc. DIN 11850 series 2, OD - Tube or DIN EN ISO 1127)

* Depending on operating parameters

SÜDMO Components GmbH

Industriestrasse 7
D-73469 Riesbürg
Germany

Tel. +49 (0) 9081 803-0
Fax +49 (0) 9081 803-158

Email: info@sudmo.de
Internet: www.sudmo.de

 A NORIT COMPANY

 SÜDMO